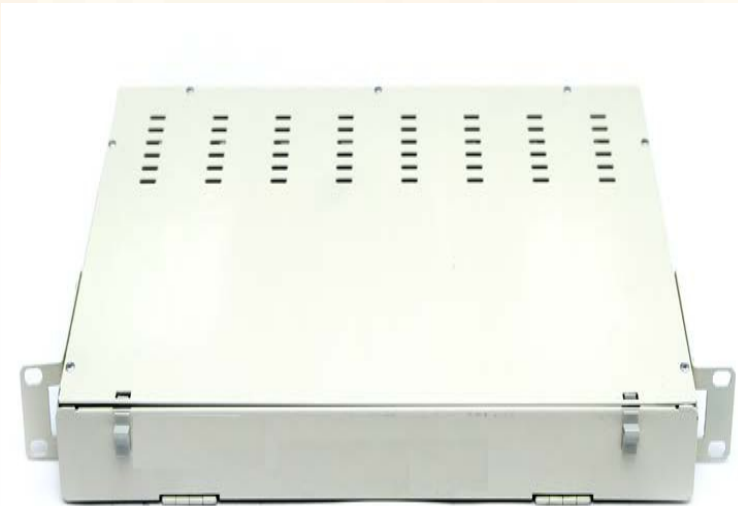


## OSF Swing Series Optical Splitter Frame 19" / 21" mounting



OSF Swing Series Fiber Optic Enclosures offered are high quality 19 "/21" standard frame for termination / splitting of fibers in FTTH/FTTB/FTTP networks.

OSF Swing Series enclosures provide in building optical splitting and routing facility. It is ideal for small to big fiber splitting / termination inside building/offices / and central offices.

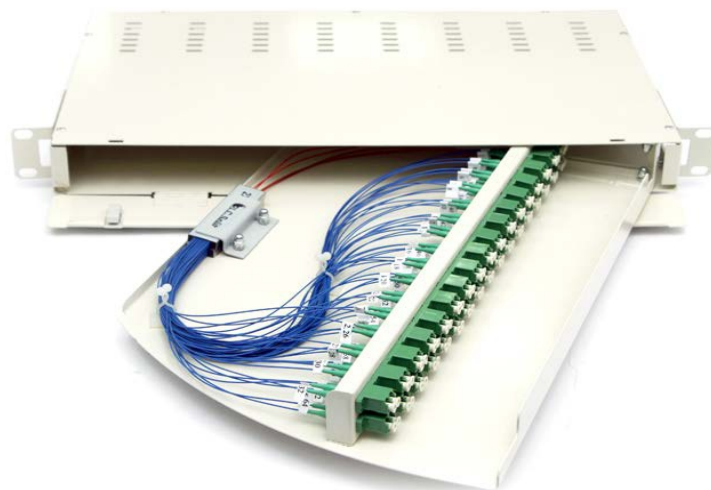
OSF Swing Series enclosures are user friendly, with flexible installation from front and back side.

### Description:

- ▶ Stylish and innovative design that can serve the need for today's advanced network use.
- ▶ Facilitates Splitting and termination purposes.
- ▶ Excellent routing, storage, protection and management functions
- ▶ Suitable for organization and administration for splitting /Termination of fiber optic cables and Patching of patch cords to the system.
- ▶ Manufactured from Galvanized Steel Sheets with Powder Coated Gray Color RAL 7035 /7032 or customer specific.
- ▶ Accommodates standard LC connector and adapters.

### Recommended Application:

- ▶ Telecom Rooms
- ▶ Data Centers
- ▶ Entrance facility
- ▶ Racks, Cabinets & FDFs



# OSF Swing Series Optical Splitter Frame 19" / 21" mounting

## Optical Characteristics:

### Single-Mode OSF

#### Parameters

Optical Wavelength  
 Insertion Loss  
 Return Loss  
 Operating Temperature  
 Pigtail Standard  
 Connector /Adapter Standard

#### Specifications


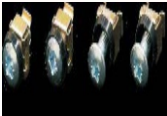
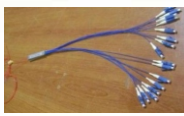

1260 nm to 1650 nm (Typical: 0.20dB)  
 Maximum 0.30 dB  
 Min. 50 dB for PC type Adapters , Min. 60 dB for APC type Adapters  
 - 10 C to + 60 C  
 SM (G.652-D, G.656 & G.657A)  
 Telcordia, EIA / TIA and IEC Compliance

## PLC Splitters

Specifications:		1 x 2 50/50	2 x 2 50/50	1 x 4	2 x 4	1 x 8	2 x 8	1 x 16	2 x 16	1 x 32	2 x 32
Operating Wavelength		1260 - 1620 nm									
Fiber Type		Single Mode ITU-T G657-A									
*Insertion Loss ( dB )	Typical	3.6		6.8		10.2		13.2		16.2	17.2
	Max	3.8		7.2	7.8	10.6	11.2	13.8	14.6	17.0	17.5
Return Loss ( dB ) Min		55/50	55/50	55/50	55/50	55/50	55/50	55/50	55/50	55/50	55/50
PDL ( dB )	Typical	0.1	0.1	0.1	0.1	0.1	0.2	0.2	0.3	0.2	0.3
	Max	0.2	0.2	0.2	0.2	0.2	0.3	0.3	0.4	0.3	0.4
Directivity ( dB )		55	55	55	55	55	55	55	55	55	55
Wavelength Dependant Loss ( dB )	Typical	0.2	0.2	0.2	0.3	0.2	0.3	0.3	0.3	0.3	0.3
	Max	0.3	0.3	0.3	0.5	0.3	0.5	0.5	0.5	0.5	0.5
Temperature Stability		Typical									
(-40 °C ~ + 85 °C )		Max									
		0.3	0.3	0.3	0.3	0.3	0.3	0.4	0.4	0.4	0.4
		0.5	0.5	0.5	0.5	0.5	0.5	0.5	0.5	0.5	0.5

# OSF Swing Series Optical Splitter Frame 19" / 21" mounting

## Accessories :

Cable Ring Holders	Cage Nuts	Fiber Splitter	Cable Ties
			

## Product Categorization:

Splitter Type	No. of Splitters	*Adapter Type	Dimensions ( H x W x D ) mm
1: 2	4	LC/APC	45 x 445 x 250
1: 2	8	LC/APC	45 x 445 x 250
1: 2	16	LC/APC	45 x 445 x 250
2: 2	4	LC/APC	45 x 445 x 250
2: 2	8	LC/APC	45 x 445 x 250
1: 4	4	LC/APC	45 x 445 x 250
1: 4	8	LC/APC	45 x 445 x 250
2: 4	4	LC/APC	45 x 445 x 250
2: 4	8	LC/APC	45 x 445 x 250
1: 8	2	LC/APC	45 x 445 x 250
1: 8	4	LC/APC	45 x 445 x 250
2: 8	2	LC/APC	45 x 445 x 250
2: 8	4	LC/APC	45 x 445 x 250
1: 16	2	LC/APC	45 x 445 x 250
2: 16	2	LC/APC	45 x 445 x 250
1: 32	1	LC/APC	45 x 445 x 250
2: 32	1	LC/APC	45 x 445 x 250

## Product Drawings:

